

# ARRL Handbook CD

## Template File

**Title:** R2

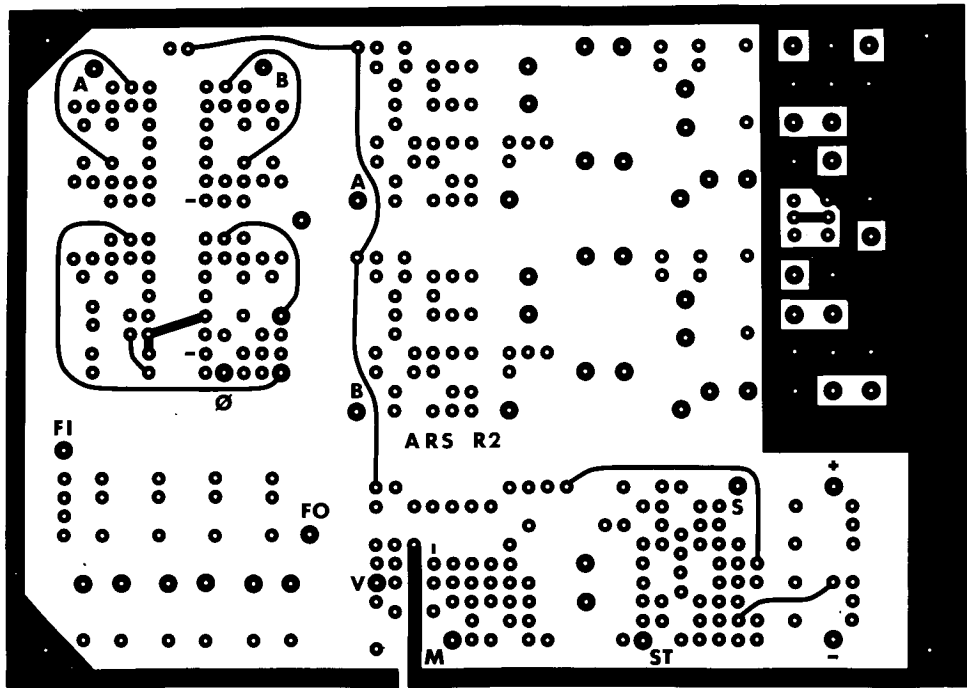
**Chapter:** 17

**Topic:** The R2: An Image-Rejecting D-C Receiver

Template contains:

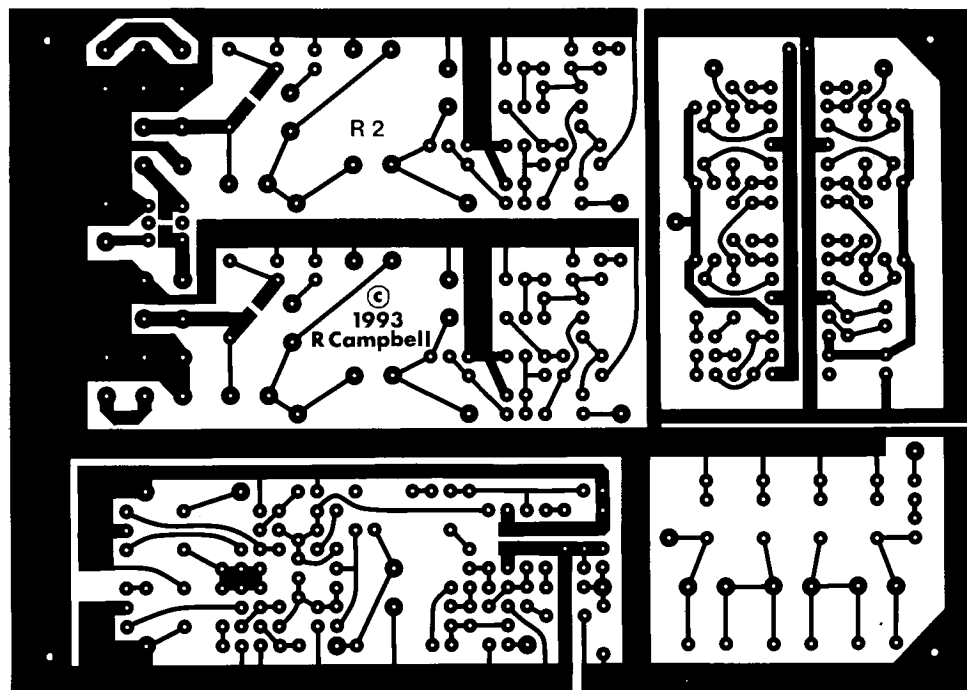
PC board etching patterns.

Parts placement diagram.



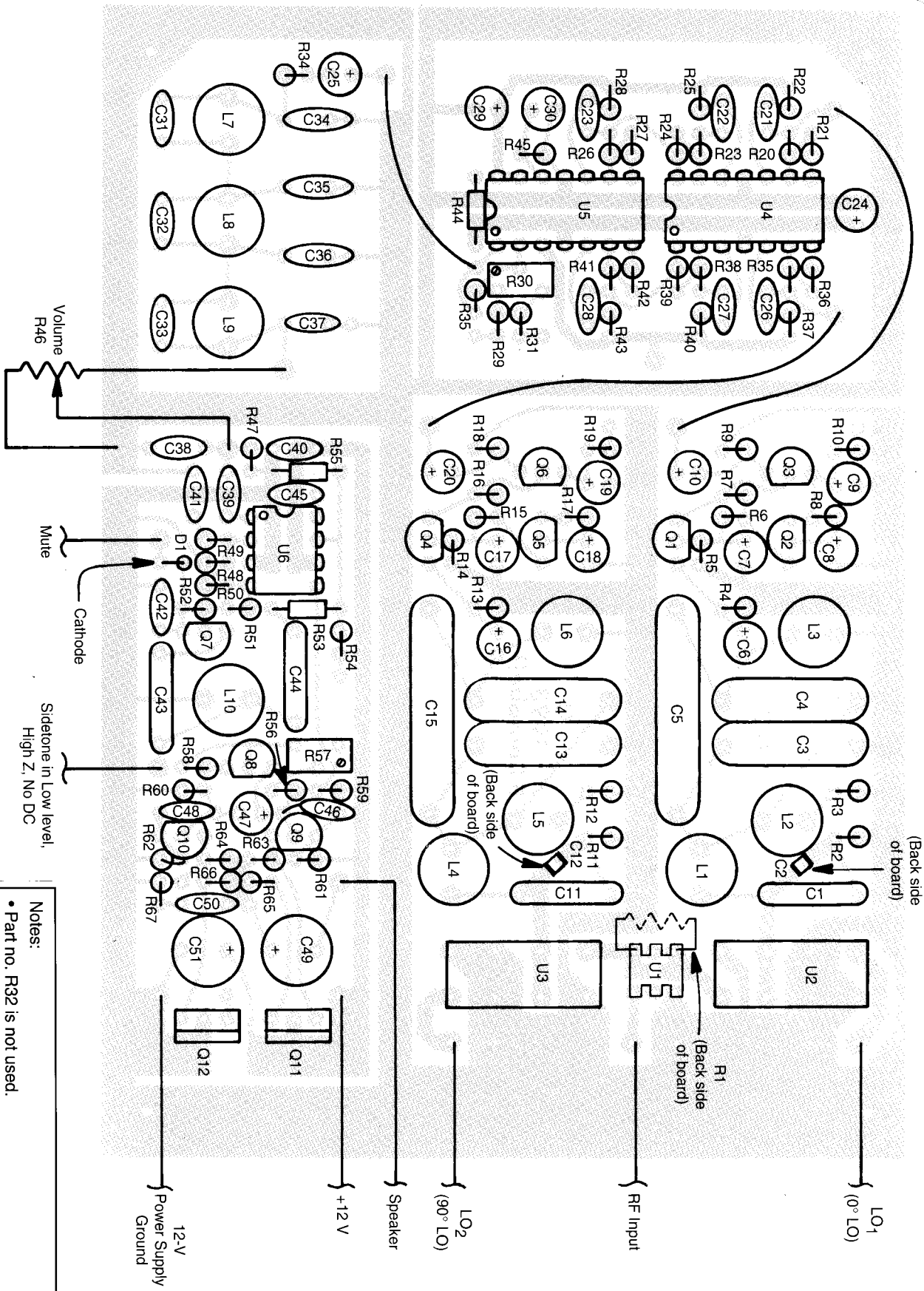
Top foil

Campbell R2 board, January 1993 *GST*. The author grants permission for individuals to reproduce and use this artwork to make PC boards only for personal, noncommercial use. Reproduction of this artwork to make PC boards for commercial use is prohibited.



Bottom foil

Note: Although this artwork is for a double-sided PC board, a single-sided version may be made using only the bottom foil and wire jumpers in place of the traces on the top side of the board.



**Notes:**

- Part no. R32 is not used.
- Part no. R33 is removed from circuit.
- Part no. R35 is used twice. Both R35s are 10 kΩ.
- R49 and C41 are reversed from the schematic (C41 connects to ground).
- Q10 is labeled as a 2N3904. It's actually a 2N3906 (the symbol is correct).
- The schematic shows two Q9s. The 2N3904 labeled Q9 next to Q5 and Q6 is actually Q4.